

Integration made easy

Dashboard installation kits are only half the battle of car audio installations. As OEM's develop new technologies and new features in cars, integrating radios becomes more complicated than just bolting a radio in. Scosche is not only committed to building dash kits with the best fit and finish, but also making Integration Easy! Scosche develops plug and play harness adapters for vehicles using the newest technology. Finally, Scosche makes it possible to integrate aftermarket accessories into vehicles using the GM LAN, CANBUS and even MOST network systems.



GM21SR

2007-up select
General Motors/w OnStar

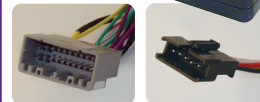
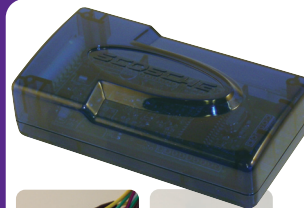
- GM LAN High Speed Stereo Replacement Interface
- 12V accessory power driven via data, fully compatible with factory RAP system (Retained Accessory Power)
- Retains full OnStar functionality
- Compatible with both non-Bose and Bose systems
- Retains factory warning chimes
- Retains parking assist chimes
- Adjustable volume for warning chimes and OnStar
- Chime reminders are played through factory speakers



CR03SR

2005-07 Chrysler,
Dodge, Jeep

- 2005-07 Chrysler, Dodge, Jeep CANBUS Radio Replacement Interface
- Supplies 12V R.A.P. (Retained Accessory Power), parking brake output, reverse output, illumination output, and vehicle speed signal output. (VSS)
- Auto detects and turns on the factory amplifier when equipped.
- Plug-n-play installation



GM22SR

2007-up select
General Motors/non OnStar

- GM LAN High Speed Stereo Replacement Interface
- 12V accessory power driven via data, fully compatible with factory RAP system (Retained Accessory Power)
- Compatible with both non-Bose and Bose systems
- Retains factory warning chimes
- Retains parking assist chimes
- Adjustable volume for warning chimes
- Chime reminders are played through factory speakers



CR06SR

2007-up Jeep and Dodge
Stereo Replacement with
factory amplified systems

- Supplies 12V R.A.P. (Retained Accessory Power), parking brake output, reverse output, illumination output, and vehicle speed signal output. (VSS)
- Auto detects and turns on the factory amplifier when equipped.
- Plug-n-play installation



800.363.4490 ext 1

sales hot line

www.scosche.com

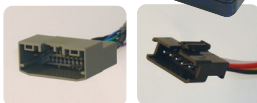
SCOSCHE®

OE Integration

GM/CHRYSLER INTERFACE SOLUTIONS

CR07SR

2007-up Chrysler/Dodge Stereo Replacement with factory amplified systems



- Supplies 12V R.A.P. (Retained Accessory Power), parking brake output, reverse output, illumination output, and vehicle speed signal output. (VSS)
- Auto detects and turns on the factory amplifier when equipped.
- Plug-n-play installation



GMOS210

2000-06 GM Onstar Interface



- OnStar Interface for Class II non-Bose vehicles (GM06 version).



GM19SR

2000-up Cadillac

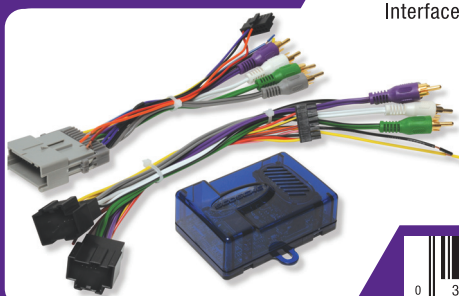


- Radio Replacement interface for Class II Cadillac Deville, Eldorado & Seville with or without OnStar & Bose. Retains warning chimes.



GM13SR

2004-up GM



- 11-Bit Stereo Replacement Interface



GM20SR

2003-06 Cadillac



- Radio Replacement interface for Cadillac CTS/SRX. Retains warning chimes.



GM14SR

2001-05 GM

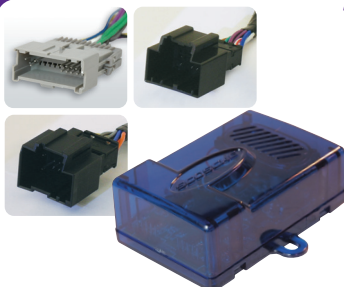


- 2001-up select GM Class II "Dock-N-Lock" Radio Replacement Interface.



GM2209SR

2003-up GM Class II and GMLAN Stereo Replacement Interface

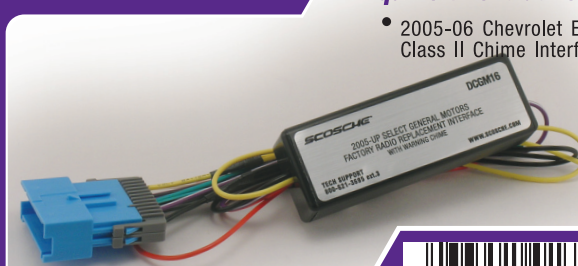


- 2003-up GM Class II and GM LAN stereo replacement interface.
- Stereo Replacement w/Chime retention/STD Bose®/NON Onstar®/NON Premium Bose®.
- 12v accessory power driven via data, fully compatible with factory Rap system (Retained accessory power)



GM16SR

2005-06 Chevrolet Equinox/Pontiac Torrent



- 2005-06 Chevrolet Equinox Class II Chime Interface.



800.621.3695 ext 3
tech support

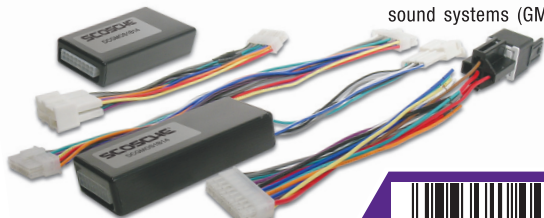
800.350.0687
fax orders

GM

GMOS1B14

1998-00 GM Onstar Interface

- OnStar® Interface for non-Class II vehicles with Bose® sound systems (GM02 version)



GMOS213

1998-00 GM Onstar Interface

- OnStar Interface for non-Class II non-Bose vehicles (GM02 version).



GMOS2B11

2003-06 GM Onstar Interface

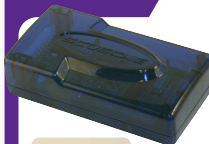
- OnStar Interface for Class II with Bose vehicles (GM06 version).



FDSR

2007-up Ford/Lincoln/Mercury Stereo Replacement with factory amplified systems

- Supplies 12V R.A.P. (Retained Accessory Power), parking brake output, reverse output, illumination output, and vehicle speed signal output. (VSS)
- RCA Output from factory rear seat entertainment and auxiliary jack
- Retains rears seat entertainment single play/dual play active
- Turns on the factory THX® amplifier when equipped
- Plug-n-play installation



GMCM2B12

2003-06 GM Chime Module

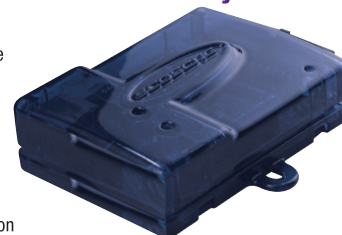
- Chime Module for use with GMOS210, GMOS2B11, GMOS213 & GMOS1B14.



TA07SR

2003-up select Toyota/Lexus JBL/Premium Interface

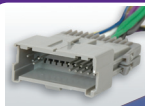
- Replace the factory radio and utilize the factory amplifier without having to "re-wire" the entire system.
- Make the installation of any aftermarket head-unit simple for vehicles with data driven JBL systems or JBL synthesis systems
- in select Toyota and Lexus vehicles. It even self adjusts to avoid distortion of factory speakers.



GM09SR

2000-07 GM Class II Stereo Replacement Interface

- 2000-07 GM Class II stereo replacement interface.
- Stereo Replacement w/Chime retention/STD Bose®/NON Onstar®/NON Premium Bose®.
- 12v accessory power driven via data, fully compatible with factory Rap system (Retained accessory power)



VW07SR

2002-07 select Volkswagen Stereo Replacement

- Supplies 12V R.A.P. (Retained Accessory Power), parking brake output, reverse output, illumination output, and vehicle speed signal output. (VSS)
- Turns on the factory amplifier when equipped.
- Plug-n-play installation



FORD

TOYOTA

VOLKSWAGEN

OE Integration

APPLICATION GUIDE

MAKE & MODEL:	YEAR:	SOUND SYSTEM QUALITY LEVEL:	STEREO REPLACEMENT INTERFACE:	STEREO REPLACEMENT & RETAIN ONSTAR®:
BUICK				
LaCrosse	2006-09	STANDARD OR PREMIUM	GM09SR ² /S3-1	GMOS2B11
Lesabre	2000-05	WITH RDS RADIO	GM14SR	
Lucerne	2006-11	STANDARD OR PREMIUM	GM22SR/S3-1	GM21SR
Enclave	2008-11	STANDARD OR PREMIUM	GM22SR/S3-1	GM21SR
Rainier	2004-07	PREMIUM OR STANDARD BOSE	GM09SR ² /S3-1	GMOS2B11 + GMCM2B12
Rainier	2004-07	STANDARD	GM09SR ² /S3-1	GMOS210
Terrazza	2005-07	PREMIUM OR STANDARD BOSE	GM09SR ² /S3-1	GMOS2B11
Terrazza	2005-07	STANDARD	GM09SR ² /S3-1	GMOS210 + GMCM2B12
CADILLAC				
Deville	2000-05	BOSE	GM19SR	GM19SR
DTS	2006-11	BOSE OR MONSOON	GM22SR/S3-1	GM21SR
Eldorado	2000-02	BOSE	GM19SR	GM19SR
Escalade	1999-00	BOSE	GMOS1B14	GMOS213
Escalade	2002	BOSE	GMOS1B14	GMOS213
Escalade/ EXT/ ESV	2003-06	PREMIUM BOSE (y91)		GMOS2B11
Escalade/ EXT/ ESV	2003-06	AFTERMARKET	GM09SR ² /S3-1	GMOS210 + GMCM2B12
Escalade/ EXT/ ESV	2007-11	STANDARD BOSE	GM22SR/S3-1	GM21SR
Escalade/ EXT/ ESV	2007-11	PREMIUM BOSE (y91)	TBA	TBA
Seville	2000-05	STANDARD OR BOSE	GM19SR	GM19SR
SRX	2003-06	STANDARD OR BOSE	GM20SR	
CHEVROLET				
Avalanche	2001-02	STANDARD	NR*	GMOS213
Avalanche	2001-02	BOSE	GM02+SLC-4	GMOS213
Avalanche	2003-06	BOSE	GM09SR ² /S3-1	GMOS2B11 + GMCM2B12
Avalanche	2003-06	STANDARD	GM09SR ² /S3-1	GMOS210 + GMCM2B12
Avalanche	2007-11	STANDARD	GM22SR/S3-1	GM21SR
Blazer	1999-02	STANDARD	NR*	GMOS213
Blazer	1999-02	BOSE	GM02+SLC-4	GMOS213
Cavalier	2000-05	STANDARD	GM09SR ² /S3-1	GMOS210 + GMCM2B12
Classic (Malibu)	2004	STANDARD	GM09SR ² /S3-1	NA
Cobalt	2007-11	STANDARD	GM13SR/S3-1	TBA
Cobalt	2005-06	STANDARD	GM13SR/S3-1	TBA
Corvette	1997-03	BOSE	GM02+SLC-4	NA
Corvette	2005-07	BOSE	GM09SR ² /S3-1	GMOS2B11 + GMCM2B12
Equinox	2007-09	STANDARD	GM22SR/S3-1	GM21SR
Equinox	2005-06	STANDARD	GM16SR	
Express	2003-07	STANDARD	GM09SR ² /S3-1	GMOS210 + GMCM2B12
Express	2008-11	STANDARD	GM22SR/S3-1	GM21SR
HHR	2006-11	STANDARD	GM13SR/S3-1	TBA
Impala	2000-05	STANDARD	GM09SR ² /S3-1	GMOS210 + GMCM2B12
Impala	2006-10	STANDARD OR PREMIUM	GM22SR/S3-1	GM21SR
Lumina	1998-99	STANDARD	NR*	NA
Lumina	1998-99	BOSE	GM02+SLC-4	NA
Malibu	2001-03	STANDARD	GM09SR ² /S3-1	NA
Malibu/MAXX	2004-07	STANDARD	GM13SR/S3-1	TBA
Malibu	2008-11	STANDARD OR PREMIUM	GM13SR/S3-1	TBA
Monte Carlo	2000-05	STANDARD	GM09SR ² /S3-1	GMOS210 + GMCM2B12
Monte Carlo	2006-07	STANDARD OR PREMIUM	GM22SR/S3-1	GM21SR
Silverado	1995-00	STANDARD	NR*	NA
Silverado	1995-00	BOSE	GM02+SLC-4	GMOS213
Silverado	2001-02	STANDARD	NR*	GMOS213
Silverado	2001-02	BOSE	GM02+SLC-4	GMOS213
Silverado	2003-06	PREMIUM OR STANDARD BOSE	GM09SR ² /S3-1	GMOS2B11 + GMCM2B12
Silverado	2003-06	STANDARD	GM09SR ² /S3-1	GMOS210 + GMCM2B12
Silverado CLASSIC	2007	STANDARD	GM09SR ² /S3-1	GMOS210 + GMCM2B12
Silverado	2007-11	STANDARD/STANDARD BOSE	GM22SR/S3-1	GM21SR
Silverado	2007-11	PREMIUM BOSE (y91)	TBA	TBA
Suburban	1998-00	STANDARD	NR*	GMOS213
Suburban	1998-00	BOSE	GM02+SLC-4	GMOS213
Suburban	2001-02	STANDARD	NR*	GMOS213
Suburban	2001-02	BOSE	GM02+SLC-4	GMOS213
Suburban	2003-06	PREMIUM OR STANDARD BOSE	GM09SR ² /S3-1	GMOS2B11 + GMCM2B12
Suburban	2003-06	STANDARD	GM09SR ² /S3-1	GMOS210 + GMCM2B12

GMOS2B11¹ = These vehicles have a premium Bose® amp that only accepts 2 channel audio inputs. The aftermarket radio will not fade, however it will still continue to balance. OnStar® volume can be controlled via the steering wheel audio controls. The GMCM2B12 chime module is not required when using the BOSE® amplifier. If you are not using the BOSE® amplifier, then the GMOS210 and GMCM2B12 interfaces are required.

NR* = Nothing Required (use standard wire harness)

NA = Not Applicable

800.621.3695 ext 3

800.350.0687

tech support

fax orders

APPLICATION GUIDE

MAKE & MODEL:	YEAR:	SOUND SYSTEM QUALITY LEVEL:	STEREO REPLACEMENT INTERFACE:	STEREO REPLACEMENT & RETAIN ONSTAR®:
CHEVROLET (Cont'd)				
Suburban	2007-11	STANDARD/STANDARD BOSE	GM22SR/S3-1	GM21SR
Suburban	2007-11	PREMIUM BOSE (y91)	TBA	TBA
Tahoe	1995-97	BOSE	GM02+SLC-4	
Tahoe	1998-00	STANDARD	NR*	GMOS213
Tahoe	1998-01	BOSE	GM02+SLC-4	GMOS213
Tahoe	2001-02	STANDARD	NR*	GMOS213
Tahoe	2001-02	BOSE	GM02+SLC-4	GMOS213
Tahoe	2003-06	PREMIUM OR STANDARD BOSE	GM09SR ² /S3-1	GMOS2B11 + GMCM2B12
Tahoe	2003-06	STANDARD	GM09SR ² /S3-1	GMOS210 + GMCM2B12
Tahoe	2007-11	STANDARD/STANDARD BOSE	GM22SR/S3-1	GM21SR
Tahoe	2007-11	PREMIUM BOSE (y91)	TBA	
TrailBlazer	2002-09	STANDARD	GM09SR ² /S3-1	GMOS210 + GMCM2B12
TrailBlazer	2002-09	PREMIUM BOSE	GM09SR ² /S3-1	GMOS2B11
TrailBlazer LS	2002-09	STANDARD	GM09SR ² /S3-1	GMOS210 + GMCM2B12
TrailBlazer LT	2002-09	PREMIUM OR STANDARD BOSE	GM09SR ² /S3-1	GMOS2B11
TrailBlazer LT	2002-09	STANDARD	GM09SR ² /S3-1	GMOS210 + GMCM2B12
TrailBlazer LTZ	2002-09	PREMIUM OR STANDARD BOSE	GM09SR ² /S3-1	GMOS2B11
TrailBlazer LTZ	2002-09	STANDARD	GM09SR ² /S3-1	GMOS210 + GMCM2B12
Transverse	2009-11	STANDARD OR PREMIUM	GM22SR/S3-1	GM21SR
Uplander	2005-07	PREMIUM OR STANDARD BOSE	GM09SR ² /S3-1	GMOS2B11
Uplander	2005-07	STANDARD	GM09SR ² /S3-1	GMOS210 + GMCM2B12
Venture	1998-00	STANDARD	NR*	NA
Venture	1998-00	BOSE	GM02+SLC-4	NA
Venture	2001-05	STANDARD	GM09SR ² /S3-1	GMOS210
CHRYSLER				
300/M/SRT	2008-10	STANDARD/NAV/BOSTON ACC.	CR06SR/S3-1	NA
300/C	2005-07	STANDARD/NAV/BOSTON ACC.	CR03SR/S3-1	NA
Aspen	2008-09	STANDARD OR PREMIUM	CR06SR/S3-1	NA
Aspen	2005-07	STANDARD OR PREMIUM	CR03SR/S3-1	NA
PT Cruiser	2006-10	STANDARD OR PREMIUM	CR03SR/S3-1	NA
Sebring/Conv.	2007-10	STANDARD OR PREMIUM	CR06SR/S3-1	NA
Town & Country	2008-10	STANDARD OR PREMIUM	CR07SR/S3-1	NA
DODGE				
Avenger Sedan	2007-10	STANDARD OR NAV	CR06SR/S3-1	NA
Caliber	2006-07	STANDARD OR NAV	CR03SR/S3-1	NA
Caravan	2008-10	STANDARD OR PREMIUM	CR07SR/S3-1	NA
Challenger	2009-11	STANDARD OR PREMIUM	CR06SR/S3-1	NA
Charger	2006-07	STANDARD/NAV/BOSTON ACC.	CR03SR/S3-1	NA
Charger	2008-10	STANDARD/NAV/BOSTON ACC.	CR06SR/S3-1	NA
Dakota	2008-11	STANDARD OR PREMIUM	CR06SR/S3-1	NA
Durango	2006-07	STANDARD/NAV/BOSTON ACC.	CR03SR/S3-1	NA
Durango	2008-09	STANDARD/NAV/BOSTON ACC.	CR06SR/S3-1	NA
Journey	2009-10	STANDARD OR PREMIUM	CR07SR/S3-1	NA
Magnum	2006-07	STANDARD/NAV/BOSTON ACC.	CR03SR/S3-1	NA
Magnum	2008-09	STANDARD/NAV/BOSTON ACC.	CR06SR/S3-1	NA
Nitro	2008-09	STANDARD OR PREMIUM	CR07SR/S3-1	NA
Ram/Mega Cab	2006-08	STANDARD OR PREMIUM	CR03SR/S3-1	NA
Ram	2009-11	STANDARD OR PREMIUM	CR07SR	NA
FORD				
Edge	2007-10	STANDARD OR AUDIOPHILE	FDSR/S3-1	NA
Escape/Hybrid	2008-11	STANDARD OR AUDIOPHILE	FDSR/S3-1	NA
Expedition	2007-11	STANDARD OR AUDIOPHILE	FDSR/S3-1	NA
Explorer	2006-10	STANDARD OR AUDIOPHILE	FDSR/S3-1	NA
Explorer Sport Trac	2007-10	STANDARD OR AUDIOPHILE	FDSR/S3-1	NA
Five Hundred	2005-07	STANDARD OR AUDIOPHILE	FDSR/S3-1	NA
Focus	2008-11	STANDARD OR AUDIOPHILE	FDSR/S3-1	NA
Freestyle	2006-07	STANDARD OR AUDIOPHILE	FDSR/S3-1	NA
F-Series	2008	STANDARD OR AUDIOPHILE	FDSR/S3-1	NA
F-Series (NEW)	2009-11	STANDARD OR AUDIOPHILE	FDSR/S3-1	NA
Fusion	2006-09	STANDARD OR AUDIOPHILE	FDSR/S3-1	NA
Fusion	2010-11	STANDARD OR AUDIOPHILE	FDSR/S3-1	NA
Mustang	2007-09	STANDARD, AUDIOPHILE OR MACH	FDSR/S3-1	NA
Mustang	2010-11	STANDARD, AUDIOPHILE OR MACH	FDSR/S3-1	NA

GM09SR² & GM22SR = Is compatible with GM's "Standard BOSE®" if OnStar® retention is not required or "Premium BOSE®" if the new system utilizes new amplifiers and OnStar® retention is not required.

2004-2005 BUICK RENDEZVOUS / 2006 HUMMER H3 require additional splice connection behind radio.

2003-2006 HUMMER H2 w/BOSE require rewire die to DATA amp turn-on.

800.363.4490 ext 1

www.scosche.com

sales hot line

SCOSCHE®

139